

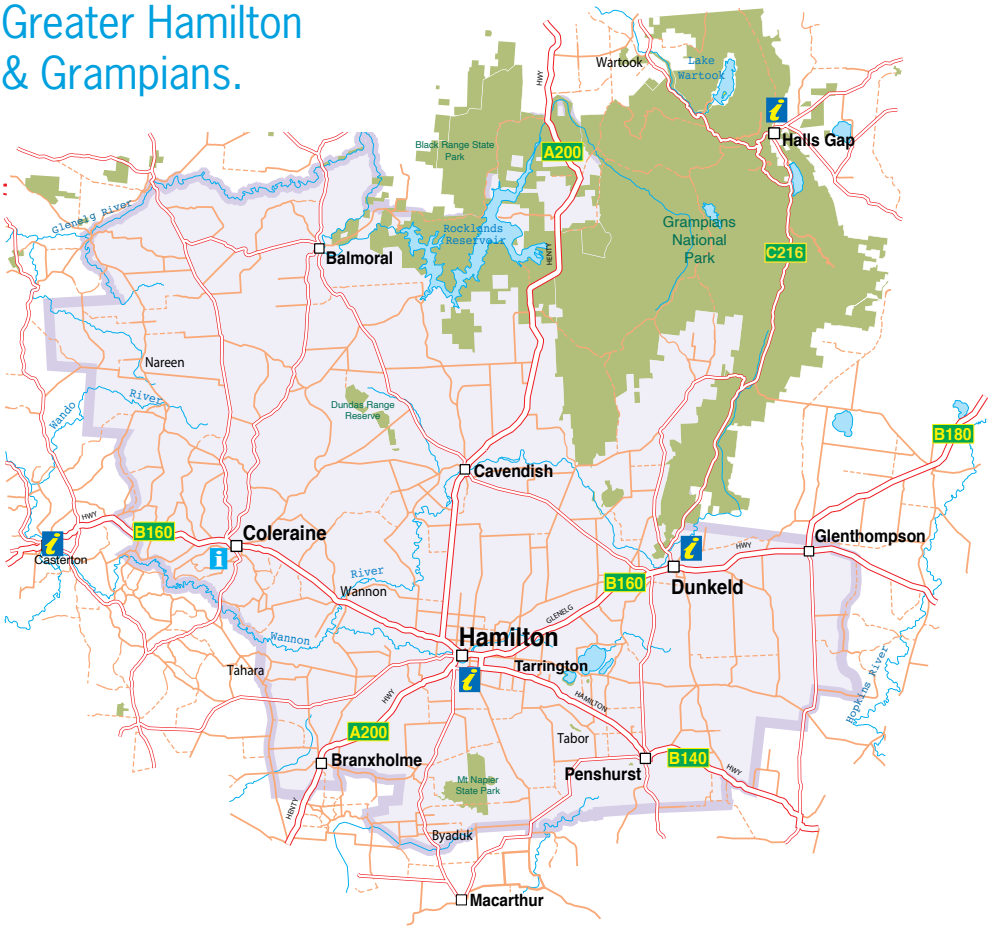
OFFICIAL VISITOR GUIDE

Hamilton & Grampians

Greater
Hamilton
ONE PLACE. MANY POSSIBILITIES



Greater Hamilton & Grampians.



Travel Times and Distances

BY CAR	KM	TIME (Approx)
Hamilton to:		
Melbourne	297	3hr 30mins
Adelaide	499	6hrs
Ballarat	180	2hrs
Geelong	235	2hr 45mins
Dunkeld	30	25mins
Halls Gap	95	1hr 15mins
Horsham	130	1hr 30mins
Portland	85	1hr
Port Fairy	84	1hr
Warrnambool	110	1hr 15mins
Mount Gambier	132	1hr 30mins
Coonawarra	136	1hr 30mins
BY COACH AND TRAIN	TIME (Approx)	
Hamilton - Ballarat (by coach)	2hr 30mins	
Ballarat - Melbourne (by train)	1hr 15mins	

Get Social or
Talk to a Local.

For inspiration on things to see and do during your time in the Greater Hamilton region, connect with **@visitgreaterhamilton** on social media or talk to a local on **1800 807 056**.

Don't forget to share your experiences with us using:

 VisitGreaterHamilton

 GreaterHamilton

Welcome.

Hamilton, situated south-west of the Grampians National Park, was Victoria's first area of pastoral settlement known as Australia Felix, and today it remains the heartbeat of a thriving farming district. Nestled in a peaceful valley surrounded by rich grazing land, the regional city retains the feel of a grand old country town. Picturesque church spires, parks and gardens and historic stone buildings reflect a proud and prosperous wool growing heritage. A vibrant arts scene, retail shopping precinct, gourmet food and wine, and stylish accommodation add modern day appeal. The area's magnificent outdoors with its ancient volcanoes, tranquil lakes and waterfalls showcases nature at its best.

Hamilton is a vibrant place to live, work, learn, invest and visit. The city boasts a diverse industry base that includes Tourism, Retail, Agriculture, Education, Health Services and Manufacturing.

Relax, enjoy, discover and delight in the gentle buzz of Hamilton. The true essence of country Victoria!

Fast Facts.

Time Zone: Eastern Standard Time

Altitude: 190 metres above sea level

Radio: MIXX FM 88.9, 3HA 981AM, 3HA 92.9FM
ABC 94.5FM, 594AM

Emergency Numbers:

Police, Fire, Ambulance - 000

State Emergency Service - Hamilton
03 5571 1157

VIC Emergency Hotline
1800 226 226

Southern Grampians Shire Council Emergency
Number (all hours) – 03 5573 0444



**Hamilton and Grampians
Visitor Information Centre**

Lonsdale Street,
Hamilton, Victoria 3300

1800 807 056

www.visitgreaterhamilton.com.au



Getting To Hamilton.

Self Drive

Hamilton is an easy 3.30 hour drive, 297 kilometres west of Melbourne. The network of major highways intersecting at Hamilton include the Hamilton B140, the Glenelg B160 and the Henty A200.

Hamilton is a 'must do' day trip for visitors staying at Halls Gap. The 90 minute drive along the tourist road C216 is regarded as the ultimate scenic route in the Grampians region.

Public Transport

V/Line operates daily and mid-week coach and train return services connecting Hamilton with Ballarat, Warrnambool, Portland, Geelong and Melbourne.

www.vline.com.au - 1800 800 007

Hamilton Railway Station - 03 5571 1682

Car Hire

A range of vehicle hire services is available at local Hamilton distributors. The Hamilton and Grampians Visitor Information Centre has a full list of transport options.

Contents.

2-3	History and Heritage
4	Arts Scene
5	Glorious Gardens
6	Food and Wine
7	Retail Therapy
8-9	Sport and Recreation
10	The Grampians
11	Kanawinka Geotrail
12	Explore Neighbouring Villages
13	Events and Conferences
14-15	Hamilton Map
16-19	Things to See and Do
20-23	Wine and Dine
24-28	Places to Stay

History and Heritage.

Hamilton was established near the border of three traditional indigenous tribal territories: the Gunditjmara land that stretches south to the coast, the Tjapwurong land to the north east and the Bunganditj territory to the west. The First Nations people who lived in these areas were known to be mostly settled, rather than nomadic.

European settlement occurred around the Hamilton region in 1837, when the pioneering Henty brothers shifted their stock inland from Portland following favourable reports from the explorer and surveyor Major Thomas Mitchell.

While much of Victoria's early foundations were built on gold, Hamilton rode on the sheep's back, with the area once referred to as the "wool capital of the world". The squatters and their wool were of great economic and social importance to the growth of the town, and today, the industry continues to thrive, with up to 50,000 lambs yarded for sale each Wednesday at the **Hamilton Regional Livestock Exchange**.

Visitors can learn about the region's wool growing heritage at the **Hamilton Pastoral Museum**,

featuring an unique collection of cottages and historic buildings. **Campes Motor Museum** is home to one of the region's most diverse collections of prized veteran and vintage vehicles and transport memorabilia.

"I don't think I'm anything out of the box. I just think if you work hard enough and long enough, you'll get somewhere". - Sir Reginald Ansett

From the rolling hills to the heavens, Hamilton is also steeped in aviation history as the original base of Ansett Airlines. The dream began in the early 1930s when an enterprising Reginald Ansett offered to take passengers from Hamilton to Ballarat in his Studebaker car. By 1935, he had a fleet of vehicles travelling to Melbourne, Mount Gambier, Naracoorte and Warrnambool, and the following year, the first Ansett flight took to the skies. The **Sir Reginald Ansett Transport Museum** is located on the shores of Lake Hamilton within the company's original aircraft hangar. The museum showcases the captivating journey of a small transport operation and onto what became a significant Australian empire. A Fokker Universal passenger plane forms the



➤ Lake Hamilton Aboriginal Sundial, Uncle Johnny Lovett, Gunditjmara / Boandik Elder



➤ The Sir Reginald Ansett Transport Museum

centrepiece of the exhibition. The museum is open daily; admission fee applies.

Historic Walks

Numerous self-guided walks weave through the city and offer the opportunity to explore the history of Hamilton's stone buildings, memorials, churches, cemetery, gardens, bridges and waterways. Many of the walks have been developed by the **Hamilton History Centre**, located on Gray Street, featuring an extensive database of photographs and resource materials. Self-guided walk booklets are also available for purchase from the Hamilton and Grampians Visitor Information Centre.

Saint Mary of the Cross MacKillop

The influence of St Mary MacKillop has been particularly strong in Victoria's Western District and Hamilton is a popular destination for pilgrims wishing to follow her journey to sainthood. Stained glass windows and banners within **Saint Mary's Catholic Church** pay homage to St Mary and her father. Alexander MacKillop spent time in

the region during the 1860s and died suddenly at Hamilton's Victoria Hotel on 19 December 1868. His funeral Mass was held within the church, and he was buried in the Catholic section of the **Old Hamilton Cemetery** on Coleraine Road.

"Mary MacKillop offers a sign of unity between all Australian Christians."

- **Father Richard Silk, 2010**

St Mary was a great believer in encouraging people to be kind and united. The local co-operation, unity, and sense of community demonstrated by the churches of Hamilton have been inspired by this remarkable and courageous woman, affectionately referred to as 'a Saint for all Australians'. The silver encased St Mary icon in Hamilton's **Christ Church Anglican Church** is believed to be the first representation of St Mary to be placed in any Anglican Church throughout the world. Saint Mary's journey of discovery is featured in a comprehensive brochure available at the Hamilton and Grampians Visitor Information Centre, and at www.visitmarymackillop.com.au.



Hamilton Post Office



Gray Street Church Spires

Arts Scene.

Inspirational landscapes, rich cultural heritage, an abundance of creative talent and strong community pride have helped shape Hamilton's vibrant art scene, with one of Australia's finest regional galleries as its centrepiece.

Hamilton Gallery's collection is celebrated for its exceptional breadth and quality. The decorative arts collection and eighteenth century works on paper, such as watercolour landscapes by Paul Sandby (1731-1809), make Hamilton Gallery a leading regional gallery in Australia.

The collection includes works by major European and Australian artists. Contemporary Australian paintings form an impressive area of display. Our glass collection spans all major European glass producing traditions, with a particularly strong representation of Scandinavian glass. The Asian art collection which began with the Herbert and May Shaw Bequest (1957) now rivals some State Gallery collections. In Chinese ceramics each of the major dynasties are represented, and contemporary Japanese ceramics are a collection highlight. Our European porcelain, stoneware and earthenware show the major stylistic and technical developments from the sixteenth century to today. It is now over sixty years since the core collection was bequeathed to the people of Hamilton.

For further information on the permanent collection and temporary exhibitions, visit www.hamiltongallery.org

Local privately owned galleries feature diverse collections ranging from early and contemporary paintings, glass and porcelain, through to sculpture and Persian rugs. Additionally, over 500 works of regional artists are showcased at the Rotary Club of Hamilton North Art Show, held annually in October. Go to www.visitgreaterhamilton.com.au for a comprehensive list of private galleries, local artists and community events that will give the visitor the opportunity to be inspired by the talent of participating artists.

Hamilton has an enviable reputation for staging significant travelling performances, from internationally renowned musicians, orchestras, ballet and stage productions, through to the popular comedy festival participants. The **Hamilton Performing Arts Centre** boasts a tiered seat theatre for 500, which is also ideal for hosting functions, conferences, seminars, meetings and expos. In addition, each June the venue is home to the annual Hamilton Eisteddfod, which for over 5 decades has showcased the music and dance talents of tomorrow's stars. To see what's on at the Hamilton Performing Arts Centre and to book your box office ticket, visit www.hamiltonpac.com.au.



Hamilton Gallery

Glorious Gardens.

Plants simply thrive in the lush, volcanic soils that come with this territory, and the Hamilton district contains some of the finest public and private gardens in the state. With its towering oaks and manicured lawns, the **Hamilton Botanic Gardens** is the jewel in the crown, blending English-style grandeur with a strong welcoming feel. The first plantings at the site took place in 1870, but a more formalised plan was developed a decade later by William Guilfoyle, the curator of the Melbourne Royal Botanic Gardens and one of Australia's most respected garden designers and botanists.

Today, the garden is included on the Victorian Heritage Register as one of the State's most intact examples of a 19th-century regional civic garden. Set over four hectares, it has key botanical significance with several tree species listed on the Register of Significant Trees. These include Victoria's only known *Gymnocladus dioica* (Kentucky Coffee Tree), largest known *Chamaecyparis funebris* (Funeral Cypress), and two rare *Quercus leucotrichophora* (Himalayan Oaks). The Hamilton Botanic Gardens also has a restored 1881 caretaker's cottage with a sensory garden, a band rotunda (c.1900), two aviaries, decorative fountains, a lake, playground, barbecue facilities, a 1920 memorial fountain and a canon from the HMVS Nelson (c.1860s). The gardens are open every day and are incredibly popular. William Guilfoyle's original design plans and list of suggested plantings are held in the Hamilton Art Gallery.

Hamilton, with its rich, fertile soils and reliable rainfall, is home to many significant private gardens. Some plantings date back to the early 20th century. In recent years, community and memorial gardens, vegetable and herb plantings, along with orchards, have been creatively established throughout the city centre and surrounds. A drive or walk around the city will reward the visitor with inspirational vistas that have been lovingly created by enthusiastic gardeners. Within a 30 minute drive of Hamilton, the Dunkeld Arboretum, Penshurst Wetlands Garden and the Coleraine Arboretum are waiting to be explored.



Hamilton Botanic Gardens

Food and Wine.

The rich, fertile soils of the region give rise to a delectable menu of home-grown produce. Visitors can follow the journey from the paddock to the plate by purchasing a range of goods sourced from the farm gate. You can sample the end product at the fine selection of cafes and restaurants that have helped to put this part of Victoria on the map. Regional produce is available at several locations, including **Hamilton Hamper**, located on Gray Street. Additionally, the **Hamilton Farmers' Market**, held on the last Saturday of the month at the **Hamilton Institute of Rural Learning**, is a must visit.

Henty Wine Region

No regional gourmet experience is complete without a glass of 'something local', and the wider region surrounding Hamilton has become renowned for its diverse cool climate wine styles that demonstrate exceptional quality and value. The **Henty Wine Region** (www.hentywineregion.org.au) stretches from Hamilton to Portland on the coast and was named after the pioneer Edward Henty. Edward settled in the district after travelling from Launceston on board the Thistle in 1834. One cask of grape vine cuttings was recorded on the ship's log, and it is the first record of vines arriving in Victoria.

Check with the Hamilton and Grampians Visitor Information Centre for the latest details and opportunities to sample or purchase local wines at the cellar door, restaurants or local stockists.



Wineries.

Bochara

1099 Glenelg Highway, Bochara
03 5571 9309
bocharawines.com.au

Crawford River

741 Upper Hotspur Road, Condah
03 5578 2267
crawfordriverwines.com

Henty Estate

657 Hensley Park Road, Hamilton
03 5572 4446
henty-estate.com.au

Herrmann Wines

6396 Glenelg Highway, Dunkeld
0499 364 462
herrmannwines@optusnet.com.au

Hochkirch

7389 Hamilton Highway, Tarrington
03 5573 5200
hochkirch@bigpond.com

Mt Napier

452 Picnic Road, Tarrington
03 5571 9850
joconnor66@hotmail.com

Pierrepoint Wines

271 Pierrepoint Road, Tarrington
03 5572 5553
pierrepointwines.com.au

Suffoir Winery & Brewery

144 Mt Eccles Road, Macarthur
0430 382 432
suffoirwines.com.au

Tarrington Vineyards

7787 Hamilton Highway, Tarrington
03 5572 4509
tarringtonwines@bigpond.com.au

Retail Therapy.

Hamilton, a city of the Grampians, has a reputation for stylish, quality shopping in a picturesque setting. The city's central business district includes an eclectic mix of specialty stores set along lush tree-lined paved walkways. From high end interior and gift specialists to bargain op-shops, with some offering the convenience of seven-day trading.

Hamilton Hamper on Gray Street embraces all of the lost qualities of the traditional Australian country store and specialises in all unique and exclusive giftware and local boutique wines.

The iconic **Baimbridge Antiques**, located on Thompson Street, features many of the treasures once found in the gracious country homesteads around Hamilton, established during times of great prosperity. The fine antiques and jewellery will not only give visitors a strong feel for the region's pastoral heritage, but provide the opportunity to take home a piece of local history.

Lovers of boutique shopping will find an extensive range of retail options in Hamilton.



Sport and Recreation.

With a combination of unique design utilising creative landscaping treatment and next generation play installations, the **Lakes Edge Adventure Playground** offers visiting families an unforgettable experience. This ultimate play space, set into the slopes of Lake Hamilton's water-edge, offers over 90 elements which work together to create a play, learning, discovery and recreational area to cater for all ages and abilities. The themed play zones reflect Hamilton's unique environment through the use of locally occurring materials of stone, timber and water, with the aim of creating a recreational precinct that has its own unique and distinctive character. The addition of a skate park, BBQs and sheltered areas guarantees visitors will return again and again to this vibrant space.



📍 Lake Hamilton Precinct



📍 Hamilton Dog Park

The Grange Burn is a natural water system which loops around the southern edge of the city and flows through **Lake Hamilton**. A platypus ladder has been installed at the Grange Burn near **Apex Park** to allow for the safe passage of platypus along this waterway. Sunrise and sunset is the best time to spot a platypus. Apex Park also has picnic tables and toilet facilities. Fishing enthusiasts will find both the Grange Burn and Lake Hamilton the ideal setting to cast a line.

The Hamilton Golf Club boasts one of the district's leading 18 hole golf courses with challenging grass greens and a fully stocked golf shop. **The Parklands Golf Club**, also with an 18 hole course, located on the city's northern boundary has well cared-for fairways and excellent



📍 Hamilton Golf Course

sand scrapes. Meanwhile tennis enthusiasts will want to hit out at the **Hamilton Tennis Complex**, featuring six floodlit synthetic grass courts located on Ballarat Road.

Hamilton Indoor Leisure and Aquatic Centre is a year-round sporting hub and offers a full day out. Facilities include an eight-lane heated indoor 25 metre pool, children's pool, fully equipped gymnasium, four basketball courts, multi-use table tennis area, squash and racquetball, meeting space, crèche and cafe.

Other indoor family entertainment includes the modern **Hamilton Cinema** located within the **Hamilton Performing Arts Centre** precinct. With the installation of a digital format projector

and Dolby surround sound, visitors will enjoy the latest releases in a comfortable, relaxed environment. The adjoining **Hamilton Regional Library**, with access to high quality information technology, provides internet services alongside traditional print, audio and video products.

Rocklands Reservoir, located 40 minutes north west of Hamilton, reputedly has the best redfin fishing in Victoria, with trout also in good supply. Boat ramps are located at various points around the reservoir and the many bushwalking options offer wonderful views of the **Grampians National Park** and **Black Range State Park**. There is provision for caravans, as well as camping and barbeque facilities. Pets are permitted at Rocklands Reservoir.



Hamilton Botanic Gardens

The Grampians.

"The Grampians are Victoria's best back-to-nature destination, with a series of rugged, ancient mountain ranges that really deliver in the scenic stakes...This is outdoor adventure heaven, and you'll want to pack a picnic and pull on the polar fleece and get out there..." -

Getaway

The **Grampians National Park** is one of Victoria's most popular holiday destinations. Each year more than one million visitors are captivated by its breathtaking views, waterfall vistas, crisp clean air, tranquil bushland, Aboriginal Rock Art Sites and abundant wildlife. Hamilton is located within an easy 30 minute drive to the picturesque village of **Dunkeld**, the perfect base for exploring this 168,000 hectare wonderland. Alternatively, just 45 minutes to the north of Hamilton, visitors can discover unique sites accessible from the western side of the stunning Grampians National Park. The striking collection of crags, cliffs, pinnacles and bluffs attract fearless rock climbers and abseilers from around the world.

The nearby **Rocklands Reservoir** is a superb stretch of water making for a fisherman's paradise also popular with canoeists.

Spring wildflower displays create pops of colour against the heath lands, while the area's ancient rock art and rich Aboriginal culture is an endless source of new learning.

Experience the Grampians iconic walks within a 30 minute drive of Hamilton.

These include Mount Sturgeon, Mount Abrupt, The Piccaninny, The Chimney Pots, and the Billimina and Manja Shelters. Over 50 walks are featured in the Grampians Walking Map series, available at the Hamilton and Grampians Visitor Information Centre.

For more information,
parkweb.vic.gov.au,
visitgreaterhamilton.com.au
or phone **1800 807 056**



📍 Dunkeld

Kanawinka Geotrail.

Embark on a surprising journey through this amazing landscape, and travel back in time over thousands and thousands of years.

The volcanoes that dot the Western Victoria skyline form part of the significant **Kanawinka Geotrail**. This basalt landscape between Melbourne and south-eastern South Australia is a striking contrast of sweeping plains and spectacular volcanic cones. Just 20 kilometres west of Hamilton on the Upper Wannon River, the **Wannon and Nigretta Falls** were created by lava flows that surged upstream. The water flows over hardened basalt lava and cascades over a vertical precipice into pools below. A cantilevered viewing platform at Wannon Falls offers spectacular views, while interpretative signage explains local geology, flora and fauna, Koori history and details of colonial artists who painted in the area.

Nigretta Falls, which were named after an early squatter's sheep station, offers picturesque scenery, great swimming, trout fishing, river walks, picnic spots and a timber stairway leading to the base of the falls.

The Byaduk Caves in Mount Napier State Park are located 18km south of Hamilton on the Port Fairy Road, and are the most extensive set of lava caves in Australia. Formed approximately 8,000 years ago from a giant lava fountain out of Mount Napier's crater, the largest tunnels are up to 18 metres wide, 10 metres high and extend 20 metres below the surface. If you travel a

further 13 kilometres west of the Byaduk Caves, you will also come across a number of unusual rock clusters known as **lava tumuli**, which are considered to be unique in Australia, and rare on a world scale.

The dormant volcano **Mount Rouse** rises 100 metres above the surrounding volcanic plain at **Penshurst**, 20 minutes east of Hamilton. The road access to the summit provides panoramic views of the lava plain. The adjacent **Mount Eccles** volcano has several self-guided nature walks, while nearby is **Mount Napier**, the youngest and highest volcano in the Kanawinka region. The last volcanic activity was recorded there less than 8,000 years ago. A visit to the **Penshurst Volcanoes Discovery Centre** will reveal the unique story of the formation of the Kanawinka region.

For a full list of volcanic attractions, visit www.volcanoesdiscoverycentre.com.au

Did you know?

Volcanic rock created from the once hot lava flows has been used to construct the hundreds of kilometres of dry stone walls which have become a characteristic feature of the Western District landscape.



➤ Penshurst Volcanoes Discovery Centre



➤ Nigretta Falls

Explore Neighbouring Villages.

Balmoral

Pop 200; 65km NW Hamilton.

Ideally located within a few minutes of Rocklands Reservoir, Balmoral is surrounded by State forests and the nearby Black Range State Park. There is a caravan park and activities include camping, fishing, boating, bush walking, golf, tennis and a public art mural.

Branxholme

Pop 120; 25km SW Hamilton.

Branxholme is an agricultural community situated on the Henty Highway providing picturesque picnic facilities, fishing, swimming, tennis and antique store.

Byaduk and Byaduk North

Pop 50; 25km S Hamilton.

The site of Australia's most recent volcanic eruptions some 8000 years ago. Byaduk features include the Byaduk Caves, Tumuli and Harman's Valley. All easily accessible by road.

Cavendish

Pop 120; 26km N Hamilton.

Cavendish offers ideal camping amongst giant red gums along the Wannon River. Activities include fishing, tennis, historic town walks, picnic facilities and gem fossicking. The picturesque 'Settlers Walk' brings the past to life.

Coleraine

Pop 1100; 34km NW Hamilton.

Historic township west of the Wannon River featuring a specialist chocolate factory, eucalypt arboretum, historic railway station and a caravan park. Activities include fishing, golf, swimming, tennis, horse racing, bowls and croquet.

Dunkeld

Pop 450; 32km E Hamilton.

A beautiful destination from which you can explore the stunning Grampians National Park. Dunkeld, renowned for the award winning Wickens at Royal Mail and other café experiences, has an extensive range of accommodation including a community caravan park. Attractions and activities include the historical museum, arboretum, art galleries, fishing, bush walking, golf, bowls, horse racing, swimming, tennis, picnic facilities and bike riding.

Glenthompson

Pop 170; 50 km E Hamilton.

Agricultural and pastoral community. Swimming, childrens playground, tennis and picnic facilities are all available.

Penshurst

Pop 485; 33km SE Hamilton.

Penshurst, the village at the foot of Mt Rouse, is steeped in volcanic features, showcased at the Volcanoes Discovery Centre. The caravan park is located near the Wetland Gardens and activities include swimming, horse racing, tennis, historic town walks and picnic facilities.

Tarrington

Pop 90; 6km SE Hamilton.

Tarrington is a small village renowned for its German heritage, fine wine and restaurant/ cafe. Offering picnic facilities, wineries, weekend antiques and bike/walking track that connects to Hamilton.

Free WiFi is available at the Hamilton & Grampians Visitor Information Centre and across the central business district of each town. Check your wireless device, and connect with us - **connectGH - Free**



Events and Conferences.

The Greater Hamilton region hosts over 200 events throughout the year, from world-class sporting fixtures and outdoor adventures to performances and exhibitions, authentic festivals, live music, markets, traditional country fairs and unique community events.

To find out what's on, check out our biannual Events Guide and monthly What's On Calendar. Pick up your copy from the Hamilton & Grampians Visitor Information centre or visit

www.sthgrampians.vic.gov.au/events

Here you can also find our Greater Hamilton Regional Planners Guide; a resource for business events and conference organisers which details our region's key event venues, services, attractions and activities.

Throughout the 10 distinctive towns and villages in the Greater Hamilton region you and your family can experience these immersive events amidst phenomenal natural wonders and feel the community spirit that makes this place so special all year round.

To request a copy of our Events Guide, What's On or Planners Guide, or for advice and information on hosting an event in our region, call **03 5573 0239** or email **events@sthgrampians.vic.gov.au**

For inspiration on things to see and do during your time in the Greater Hamilton region, call into the Hamilton & Grampians Visitor Information Centre.

You can also find a regularly updated list of local events on our Facebook page **[@visitgreaterhamilton](https://www.facebook.com/visitgreaterhamilton)**, and discover photos and videos from others enjoying our region at **www.visitgreaterhamilton.com.au**

Connect with us:
[@visitgreaterhamilton](https://www.facebook.com/visitgreaterhamilton)

Share your experiences:

[#greaterhamilton](https://www.facebook.com/visitgreaterhamilton)
[#grampians](https://www.facebook.com/visitgreaterhamilton)
[#timeforavisit](https://www.facebook.com/visitgreaterhamilton)

Highlights from our calendar of events.

January Pleasant Sunday Afternoons in the Gardens (Nov-Mar)
Hamilton Harness Racing Cup
Australia Day Celebrations

February Hamilton Farmers and Craft Market (Feb-Dec)
CLB3X3 Basketball Tournament

March Balmoral Show
Bransholme and Dunkeld Rodeos
Hamilton Relay for Life

April Murray to Moyné Cycle Relay
ANZAC Day Services
Cavendish Red Gum Festival

May Hamilton Pastoral Museum Open Weekend
Mothers Day Classic
Million Paws Walk

June Hamilton Eisteddfod
Serra Terror
Hamilton VVC Drivers Club Annual Rally

July Jack Russell Terrier & Hunting Dog Show
Woolly West Fest

August Sheepvention
Peaks and Trails Run
Coleraine Art & Photography Show

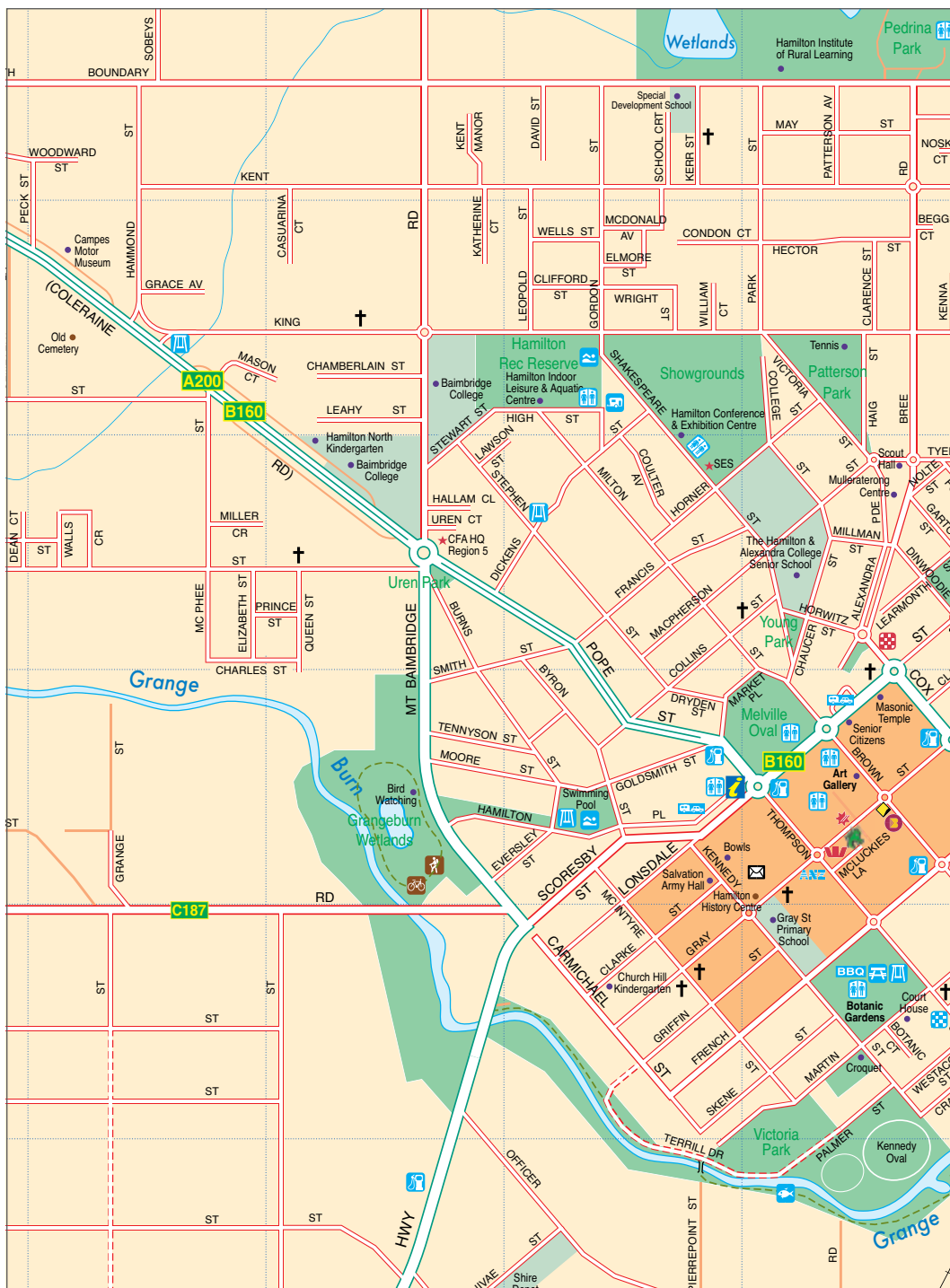
September Handbury Karting Titles
Coleraine Cup

October The Australian Pedal Car Grand Prix
Hamilton Cup
Rotary Art Show
3 Peaks Festival

November Country Shows
Hamilton Food & Wine Fiesta
Dunkeld Races
Tarrington Laternenfest

December St Mary's Christmas Expo & Street Parade
Penshurst Boxing Day Races
Hamilton New Year's Eve Street Party & Fireworks

Find **[@visitgreaterhamilton](https://www.facebook.com/visitgreaterhamilton)** on social media for the latest events and updates, and share your experiences here using **[#greaterhamilton](https://www.facebook.com/visitgreaterhamilton)** or **[#timeforavisit](https://www.facebook.com/visitgreaterhamilton)**

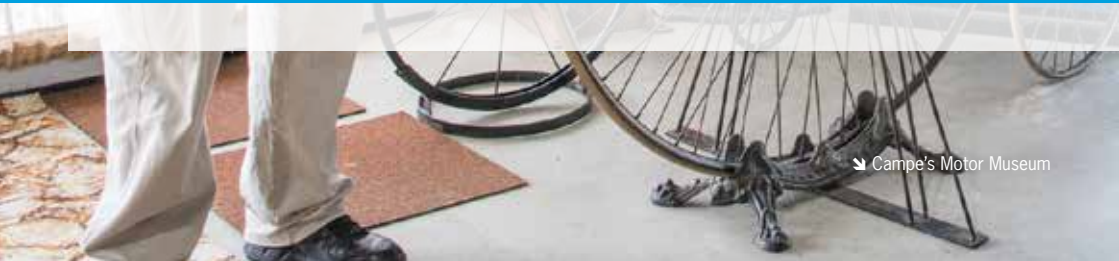






Things to See and Do.

From unforgettable play experiences to engaging art pieces, Hamilton offers an exciting mix of activity options for the whole family, giving visitors the perfect reason to plan a return visit.



Baimbridge



64 Thompson Street
03 5572 2516
baimbridge.com.au

Large show room of 18th and 19th century antique furniture. Antique jewellery, estate and contemporary. Open Monday to Saturday.



Campe's Motor Museum



226 Coleraine Road
0419 168 400 / 0417 712 542
campescoacheshamilton@bigpond.com

View one of the region's most diverse collections of prized veteran & vintage vehicles, all in working order, and transport memorabilia. The collection will have great appeal to families & groups alike.



Hamilton Arteffects



52 Brown Street
03 5571 1852
edwards3300@gmail.com

Conveniently located in the centre of Hamilton, the gallery displays original paintings by Hamilton & regional artists. Specialising in framing.



Hamilton Botanic Gardens



Cnr Thompson & French Street
1800 807 056
visitgreaterhamilton.com.au

One of Victoria's most outstanding regional civic gardens, recognised as an important part of Victoria's heritage. Designed in 1881 by William Guilfoyle, the gardens are open every day.



Hamilton Cinema



109 Brown Street
03 5573 0472
hamiltoncinema.com.au

Located within the Performing Arts Precinct, this facility boasts a new digital format with Dolby surround sound. Seating capacity of 121, excellent wheelchair access & hearing loop available.

Hamilton Gallery



107 Brown Street
03 5573 0460
hamiltongallery.org

Renowned for historic & contemporary collections of silver, porcelain, glass, paintings & prints exhibited in six galleries. Mon-Fri 10-5, Sat-Sun 10-2.



Hamilton History Centre



43 Gray Street
03 5572 4933
hamiltonhistory@ansonic.com.au

Local history & genealogy records of Hamilton & district. A must visit for those on a history journey. Open Sun-Fri 2:00pm-5:00pm or by appointment.



↗ Ansett Museum

Hamilton Indoor Leisure & Aquatic Centre



83-93 Shakespeare Street
03 5551 4300
hilac.com.au

State of the art leisure centre incorporating heated indoor pools, gymnasium, multi-purpose courts, table tennis, squash & racquetball, creche. Visitors most welcome.



Hamilton Institute of Rural Learning



333 North Boundary Road
03 5572 3699
hirl.org.au

HIRL is an eye-catching, environmentally friendly, mud-brick building. The HIRL grounds feature several organic vegetable & flower gardens. Popular Farmers' Markets are held last Saturday of each month.



Hamilton Outdoor Swimming Pool



Hamilton Place
03 5551 4305
hilac.com.au

The 50m outdoor pool is located a short distance from the CBD, and is open in Summer. Features manicured lawn area, mature trees & Kiosk. Lap swimming and recreational swimming welcome.



Hamilton Pastoral Museum



Cnr Ballarat Road & Hiller Lane
03 5571 1595
hamiltonpastoralmuseum.com.au

Farm equipment, tractors, engines, household items, small town memorabilia. Two Rallies per year exhibit working displays. Open last Saturday of the month and by appointment. Groups most welcome.



Hamilton Performing Art Centre



113 Brown Street
03 5573 0429
hamiltonpac.com.au

The major venue in the area for a wide variety of both touring and local performances. The Centre also hosts conferences, exhibitions, meetings, social functions and cinema complex.

Hamilton Regional Livestock Exchange



Henty Highway
03 5573 0444
visitgreaterhamilton.com.au

The Hamilton Regional Livestock Exchange is the major selling centre of the Southern Grampians with over 1 million sheep & lambs and 50,000 cattle offered annually.

Hamilton Showgrounds



Cnr Shakespeare & King Street
03 5572 2563
hamiltonshowgrounds.com.au

12 hectare site located less than 1km from the CBD. Facilities include the Exhibition & Conference Centre & several community & recreation clubs. Hosts many local events including Sheepvention.



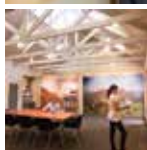
McGuigan Lane

Hamilton & Grampians Visitor Information



Lonsdale Street
1800 807 056
visitgreaterhamilton.com.au

Drop into the Hamilton and Grampians Visitor Information Centre, identified by the distinctive blue and yellow i logo, for the most up-to-date information.



Lake Hamilton Precinct



Mill Road / Rippon Road
1800 807 056
visitgreaterhamilton.com.au

Perfect destination for water skiing, sailing, canoeing, rowing & fishing. The facility includes all abilities accessible playgrounds, BBQ/picnic shelters, toilet blocks, dog park and walking/cycling track network.



MUD Gallery



101 Gray Street
03 5572 3699
hirl.org.au

A not-for-profit community space which promotes the artistic talents of our local creatives. Featuring painting, ceramics, crochet, woodwork, jewellery and more.



Petschel House



107 Petschels Lane
0417 585 102
petschelhouse.com.au

This historic bluestone property is home to the talented couple Jenni and Mervyn who share their love of fine art with visitors and students alike. Petschel House offers garden tours, art workshops and framing services.



Sir Reginald Ansett Transport Museum



Cnr Ballarat Road & Riley Street
03 5571 2767
ansettmuseum.com.au

Home to the birthplace of Ansett Airlines, the museum tells the story of the Ansett empire with displays of aviation history and memorabilia. Open 7 days 10 - 4pm - Closed ANZAC Day, Good Friday and Christmas Day.



Wannon & Nigretta Falls



Glenelg Highway
1800 807 056
visitgreaterhamilton.com.au

Just 20km west of Hamilton lie 2 exceptional waterfalls, major features of the Kanawinka volcanic region. Excellent viewing areas, river walks, BBQ/picnic facilities, toilets and fishing areas.



Western Speedway



7 North Boundary Road
03 5571 9091
westernspeedwayhamilton.com.au

Motorsport entertainment for all ages. Race meetings held from December to May. See website for more details.



📍 Lake Hamilton

A woman with long brown hair, wearing a yellow top, is smiling and holding a glass of white wine. She is sitting at a table in a restaurant, with a bottle of wine and another glass visible. The background is blurred, showing warm lights and a kitchen area.

Wine & Dine.

Follow the journey from paddock to plate. With fine Henty wines, award winning restaurants and fresh local produce, your tastebuds won't be disappointed.

Alexandra House



134 Brown Street
03 5571 1736
alexandrahouse.com.au

Alexandra House caters for any function from weddings, 21st, 50th, 80th or just coming in for a great value meal. Supporting sport and the local community.



Bandicoot Motor Inn



152 Ballarat Road
03 5572 1688
bandicootmotorinn.com.au

The Bandicoot Restaurant, located within the Bandicoot Motel precinct, specialises in quality food at affordable prices. Caters for the individual traveller, or groups up to 45.



Blue Malt Restaurant & Beer Lounge



106 Gray Street
03 5572 5417
bluemalt@bigpond.com

Blue Malt Restaurant & Beer Lounge is renowned for its great food, friendly service and a beer list of 60 local, national and international beers. Menu features a mediterranean theme.



Botanical Dining & Bar



75 French Street
03 5572 1855
comfortinnbotanical.com.au

The Comfort Inn Botanical boasts the delightful on-site restaurant, The Botanical Dining & Bar. The Botanical offers a casual environment overlooking the Botanic Gardens.



Café Catalpa



791 Hamilton Highway, Tarrington
03 5572 1888
cafecatalpa@bigpond.com

Café Catalpa is renowned for its highly acclaimed, diverse menu that features fresh local produce and an extensive selection of regional wines.



Café Gray



109 Gray Street
03 5571 9209
hello@cafegray.com.au

Serving wholesome all day snacks, yummy morning teas and delicious lunches, teamed up with a refreshing juice bar and Rox coffee. Homemade food served by fun and friendly staff.



Caledonian Bar & Bistro



153 Thompson Street
03 5572 1055

'The Cally' is a licensed restaurant with bistro and bar dining. Live entertainment on weekends.



Commercial Hotel



145 Thompson Street
03 5572 4119

Restaurant features an extensive range of fresh Victorian produce prepared in-house with a modern influence. Bar meals available.



Court Lantern Chinese Restaurant



133 Thompson Street
03 5572 2818

Specialising in cuisine from China & Malaysia, enjoy the restaurant's friendly staff and beautiful music. Take away menu available.

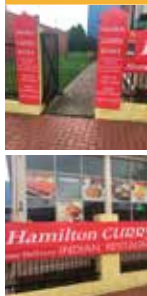
Grand Central Hotel



141 Gray Street
03 5572 2899
grandcentralhamilton.com

A popular venue for families with excellent bistro meals and wide range of beverages. Venue features kids' games room and regular promotions.

Hamilton Curry Bowl



100 Thompson Street
03 5571 9507
hamiltoncurrybowl.com.au

The Hamilton Curry Bowl menu offers a wide range of Indian specialties such as Akbari Chicken, Lamb Dishes, Beef Kashmiri, Pistacchio Kulfi and other varieties. Phone & online orders available.

Hamilton Hamper



169 Gray Street
03 5571 2088
hamiltonhampers.com.au

Gourmet café and retail store located in the heart of Hamilton. Indulge in locally sourced products and seasonal produce. Bridget and her team will ensure your visit is a memorable experience.

Izzys Tavern



71 Gray Street
03 5572 1677
izzys.com.au

With bistro by day & restaurant by night, enjoy quality meals at an affordable price in a relaxed environment. Menu available, dine in or takeaway.

Jack + Jude



99 Brown Street
03 4502 4730
info@jackandjude.com.au

Outstanding coffee and local teas offered alongside a dynamic menu featuring fresh quality local produce and an ample selection of wines and beers to try.

Little Koi



222-224 Gray Street
0468 449 238
littlekoicafe@gmail.com

Contemporary café serving breakfast, lunch, cakes and coffee. Dine in or takeaway. Ideal for all family members, with outside dining available for your four-legged friends.

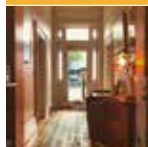
Racha Thai Restaurant



162 Gray Street
03 5572 1840

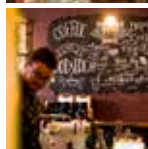
A family owned restaurant & café located in the heart of Hamilton. With a small and warm welcoming atmosphere Racha Thai represents a great Thai culture. Reasonable pricing and a great variety on the menu.

The Roxburgh



64 Thompson Street
03 5572 4857
theroxburgh.com.au

Superb coffee & tea, extensive wine list, gourmet food, ambient atmosphere and personal service. Indoor and outdoor dining.



Thai Town Restaurant



105 Thompson Street
03 5571 2220
facebook.com/thaitownhamilton

Traditional Thai food freshly prepared by Thai chefs. Cooked with premium quality ingredients sourced locally. Gluten free & vegan available. Family-owned & operated. Open Tuesday Sunday for dine-in & take-away.



The Grange



142 Ballarat Road
03 5572 5755
andrew@gildos.com.au

Situated within the Comfort Inn Grange Burn, this restaurant features quality dining overlooking a garden courtyard. The Corriedale Room is available for larger functions, weddings & conferences.

Tosca Browns



211 Gray Street
bookings@toscabrowns.com.au

Tosca Browns will surprise and delight you with a range of retro dining options. Indoor-outdoor, balcony - beer garden or courtyard. Featuring a range of local produce on a seasonal menu, matched with a range of local wine and beer.



Bakeries (B) Cafes (C) Takeaways (T)

Bakers Delight	The Hub, French Street	(03) 5572 5470	(B)
Canadian Rooster	86 Lonsdale Street	(03) 5572 2257	(T)
Country French Bakery	86 Gray Street	(03) 5571 9733	(B)
Great Western Pizza	102 Thompson Street	(03) 5572 3772	(T)
KFC	91 Cox Street	(03) 5572 5970	(T)
Kings Bakery	123 Brown Street	(03) 5572 1136	(B)
Lakeside Fish & Chips	15 Ballarat Road	(03) 5572 5777	(T)
Lemon Myrtle	163 Gray Street	0418 751 531	(C)
LJ's Pizza	236 Gray Street	(03) 5572 2117	(T)
McDonalds	118 Brown Street	(03) 5571 1747	(T)
Noodle Canteen	90 Gray Street	(03) 5571 9838	(T)
Panama Fish Shop	123 Thompson Street	(03) 5572 1586	(T)
Pitstop Café	246a Coleraine Road	0429 147 900	(C)
Subway	108 Gray Street	(03) 5571 1914	(T)
Ted's Roadhouse	Glenelg Highway Hamilton	03 5572 4848	(T)
The Hive Drive Through Coffee	96 French Street Hamilton	0448 711 566	(T)
Woody's Café	113 Thompson Street	(03) 5572 5923	(C)



Places to Stay.

Hamilton is a place where you will enjoy traditional country hospitality at its best, with a wide range of accommodation options to choose from.

AAt 28 Goldsmith Motel



28 Goldsmith Street
03 5572 4347
aat28goldsmith.com.au



Golden Chain Motel offering 15 modern rooms including superior queens & town houses. Central location walking distance to restaurants. Free WiFi. Split system heating/cooling. Breakfast available.

📍 Motel

Bandicoot Motor Inn



152 Ballarat Road
03 5572 1688
bandicootmotorinn.com.au

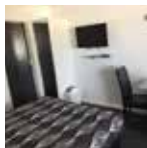
26 units set in beautiful parklands, ideally located for Western District tours. Easy reach of the town centre, family business. Onsite licensed restaurant suitable for meetings and conferences.

📍 Motel

Budget On The Lake



2 Riley Steet
03 5571 2733
budgetonthelake.com.au



Budget Chain Motel with 12 units, including a deluxe spa room. Quiet location opposite Lake Hamilton. A perfect destination for families and guests travelling on a budget.

📍 Motel

Comfort Inn Botanical



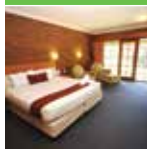
Cnr French & Thompson Street
03 5572 1855
comfortinnbotanical.com



Located only moments from Hamilton's CBD, opposite Botanic Gardens. Specialising in corporate, leisure and group bookings. 33 Units. Restaurant onsite.

📍 Motel

Grange Burn Motel



142 Ballarat Road
03 5572 5755
thegrangeburn.com.au



31 units including executive and king suites and interconnecting rooms. Award winning venue, with onsite restaurant seating up to 60. Suitable for conferences, weddings and functions.

📍 Motel

Hamilton Lakeside Motel



24 Ballarat Road
03 5572 3757
hamiltonlakesidemotel.com.au



Located near Lake Hamilton. Award winning motel. 14 ground floor units. Corporate and family rooms. Some self-contained, one fully accessible unit. Outstanding cleanliness and quality. Free WiFi and Foxtel.

📍 Motel

Hamilton Lonsdale Motel



110 Lonsdale Street
03 5572 4055
hamiltonlonsdalemotel.com.au



15 fully renovated rooms all with kitchenettes, queen beds, free Wi-Fi, Foxtel, pool and parking. Breakfast available. Centrally located in town, close to shop and restaurants.

📍 Motel

Hamilton Townhouse Motel



27 Shakespeare Street
03 5571 2517
hamiltontownhouse.com.au



Boutique style, 4 star motel with 10 units including a 2 bedroom townhouse. Close to showgrounds, convention centre, Hamilton Indoor Leisure & Aquatic Centre and town centre.

📍 Motel

Hamilton Caravan Park



Cnr Shakespeare & Dickens Street
03 5572 4235
hamiltoncaravanpark.com.au

16 well appointed ensuite cabins, all linen provided. 13 powered sites. BBQ facilities & guest laundry. Located next to Indoor Leisure & Aquatic Centre, & nearby Showgrounds & Conference precinct.

📍 Caravan Park



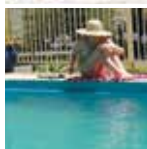
Lake Hamilton Motor Village



8 Ballarat Road
03 5572 3855
lakehamilton.com.au

Top Tourist Park with 25 cabins; grassed & ensuite sites. Facilities include free BBQ, solar heated pool, & games room. All linen provided. Easy walk to shops, restaurants, Lake Hamilton & Ansett Museum.

📍 Caravan Park



Bea's Studio



151 Robsons Road, Hamilton
0419 518 976

Located on the outskirts of Hamilton, Bea's Studio offers guests a homely stay in a semi self-contained studio unit, sleeping 2 adults.

📍 Self Contained



Boomer's Guest House



1 Uren Court
03 5572 1250
boomersguesthousehamilton.com

This 10 room house offers basic budget accommodation in a quiet location close to town. Facilities include separate male, female & accessible bathrooms, shared kitchen & coin operated laundry.

📍 Hostel



Emerald Hill Cottage



8032 Hamilton Port Fairy Road, Hamilton
0497 273 202

Self-catered cottage on a 6 acre property just 3km from Hamilton's CBD. Ducks and chickens roam free around the colourful gardens. Fruit trees, pasture, sheep and fowls will make for an enjoyable stay.

📍 Self Contained



Micky's On Learmonth



10 Learmonth Street, Hamilton
0407 869 906

Step back in time with a stay at this unique self-contained studio apartment. Guaranteed to put a big smile on your face when you walk in, the apartment has been renovated with superb retro detail while still offering all the luxury of today.

📍 Self Contained



Number 12



12 Horner Street, Hamilton
0458 836 203

The ideal retreat for families, couples or the corporate traveller. Offering simple yet stylish 3 bedroom accommodation and within walking distance to the CBD, hospital, Aquatic Centre & Showgrounds.

📍 Self Contained



Silverburn Cottage



88 Ballarat Road, Hamilton
0414 406 276

Silverburn cottage has total privacy and is a self-contained cottage sleeping 4 people in 2 bedrooms, set on 2 acres of gardens in the Hamilton township.

📍 Self Contained



Stillwater Apartments



2-4 Eversley Street
0407 666 995
stillwaterhamilton.com

Top quality executive apartments featuring private courtyard, BBQ, & wetlands views from the gazebo. Perfect for extended stays. See website for longer term rates.

🏠 Self Contained

Stirring Pot Heights



212 Coleraine Road
03 5572 2535
jtully3@bigpond.com

Affordable self-contained 2 bedroom unit, featuring full cooking & laundry facilities, onsite parking & linen provided. Ideally suited for short & long-term stays.

🏠 Self Contained

Garland Cottage B & B



18 Skene Street
03 5572 1054

Delightful small self-contained cottage set in landscaped garden. Self-service breakfast provided. Suitable for 1 couple. 10 minute walk to CBD.

🏠 Bed & Breakfast

Caledonian Hotel / Motel



153 Thompson Street
03 5572 1055

Situated adjacent to the main body of the hotel, The Caledonian Motel consists of 14 rooms with ensuites. Located on the edge of the CBD, minutes to shops, Art Gallery, Botanic Gardens, churches & hospital.

🏠 Hotel / Motel

Grand Central Hotel



141 Gray Street
03 5572 2899
grandcentralhamilton.com

Centrally located in the main street of Hamilton, this 2 storey hotel offers 14 rooms with ensuites. The hotel is a licensed gaming venue.

🏠 Hotel

Commercial Hotel



145 Thompson Street
03 5572 4119

Basic pub accommodation for the budget traveller. Clean rooms and good beds. Shared bathroom facilities. Common room with tea/coffee making facilities and TV.

🏠 Hotel



🌊 Lake Hamilton



**Hamilton & Grampians
Visitor Information Centre**

Lonsdale Street, Hamilton
Victoria 3300

Talk to a local on **1800 807 056**

www.visitgreaterhamilton.com.au

Open 7 Days

#greaterhamilton #grampians





**Free Public WiFi is now available
across the Southern Grampians Shire**

Select **connectGH - Free** in town centres

ACKNOWLEDGEMENTS.

Project Management:

Southern Grampians Shire Council
Economic Development and Tourism Unit
1 Market Place, Hamilton, Victoria 3300
www.visitgreaterhamilton.com.au

Design & Print: www.juliareader.com.au

DISCLAIMER.

Southern Grampians Shire Council, including its officers, agents and contractors ("Publisher"), has made every endeavour to ensure that details appearing in this publication are correct at the time of printing, but accept no responsibility for any inaccuracy or mis-description, whether by inclusion or omission, nor does the Publisher accept any responsibility for subsequent change or withdrawal, of details or services shown which are subject to alteration without notice. Any standard of accommodation and/or services contained in this publication are indicative only of a certain class and are based upon information provided to the Publisher. Accordingly, the Publisher makes no representation or guarantee in relation to the standard, class or fitness for purpose of that accommodation or service.





Hamilton & Grampians Visitor Information Centre
Lonsdale Street Hamilton, Vic 3300
Freecall 1800 807 056

visitgreaterhamilton.com.au



[VisitGreaterHamilton](https://www.facebook.com/VisitGreaterHamilton)



[GreaterHamilton](https://www.instagram.com/GreaterHamilton)